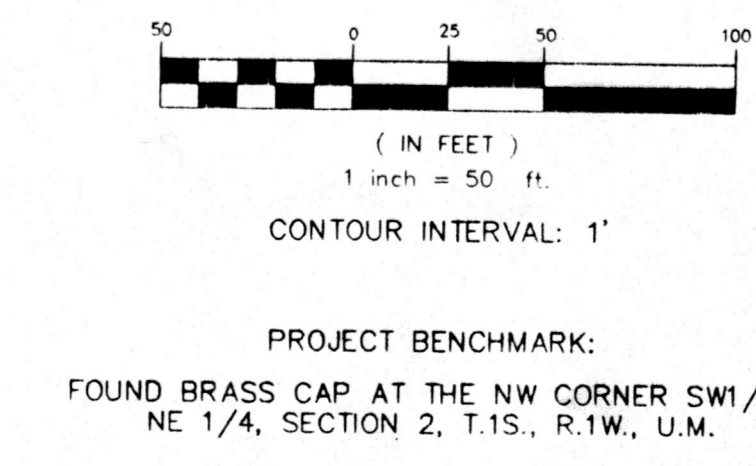
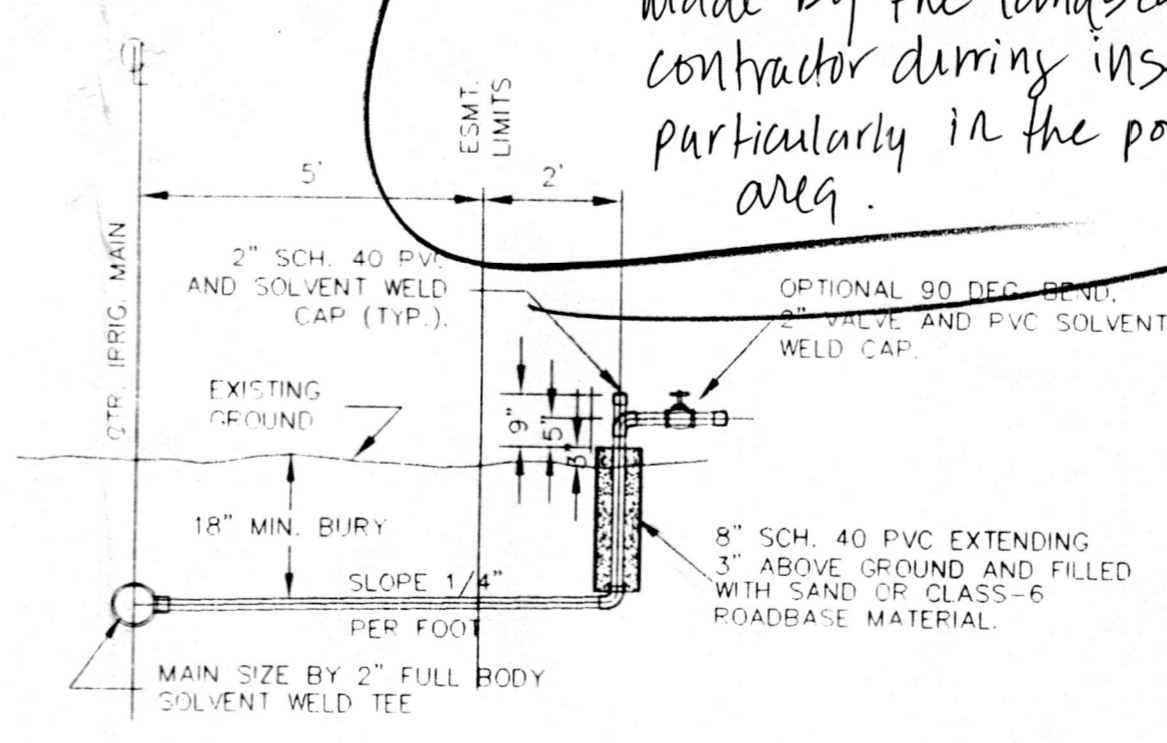


CALL UTILITY NOTIFICATION
CENTER OF COLORADO
1 - 800 - 922 - 1987
OR 534 - 6700 IN METRO DENVER
CALL 2 BUSINESS DAYS IN ADVANCE
BEFORE YOU DIG, GRADE, OR EXCAVATE
FOR THE MARKING OF UNDERGROUND
MEMBER UTILITIES.

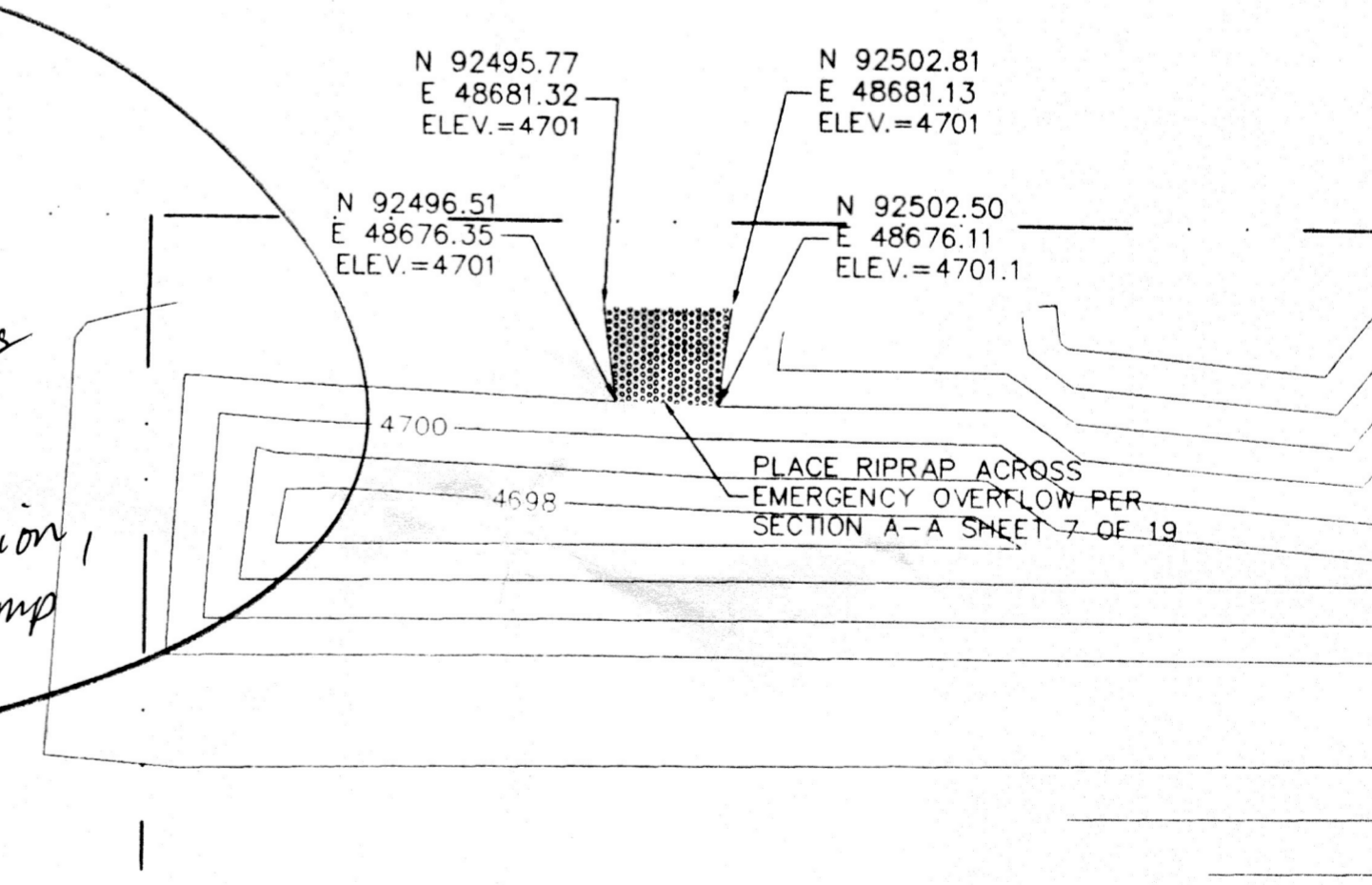


PROJECT BENCHMARK:
FOUND BRASS CAP AT THE NW CORNER SW1/4
NE 1/4, SECTION 2, T.1S., R.1W., U.M.

NOTE:
This is not an "as-built"
drawing. For design purposes
only. Some changes were
made by the landscape
contractor during installation,
particularly in the pond/pump
area.



IRRIGATION TAP DETAIL
N.T.S.



OVERFLOW DETAIL
1"=10'

REVISION	DATE	DESCRIPTION	BY	CHKD
1	12/3/98	REVISE DISTANCES AND GRADES	kwm	DAT
2	2/17/99	REVISE PER ADDITIONAL REVIEW COMMENTS	kwm	DAT
3	2/26/99	REVISE PER CITY OF GRAND JUNCTION	kwm	DAT

DENVER CHERRY/RICHARD WITT		CITY OF GRAND JUNCTION	
IRRIGATION PLAN			
THOMPSON-LANGFORD CORP. ENGINEERS AND LAND SURVEYORS 529 25 1/2 RD., SUITE B210 GRAND JUNCTION, COLORADO PH. (970) 243-8067 FAX (970) 241-2845 tlc@twest.com			
DRAWN BY	kwm	CHECKED BY	DAT
<i>David A. Witt</i> 3-1-99			
DATE:	12/1/98		
SCALE:	Horiz: 1" = 50' Vert: 1" = 5'		
Project No:	0385-001		
SHEET NO:	6 OF 19		